

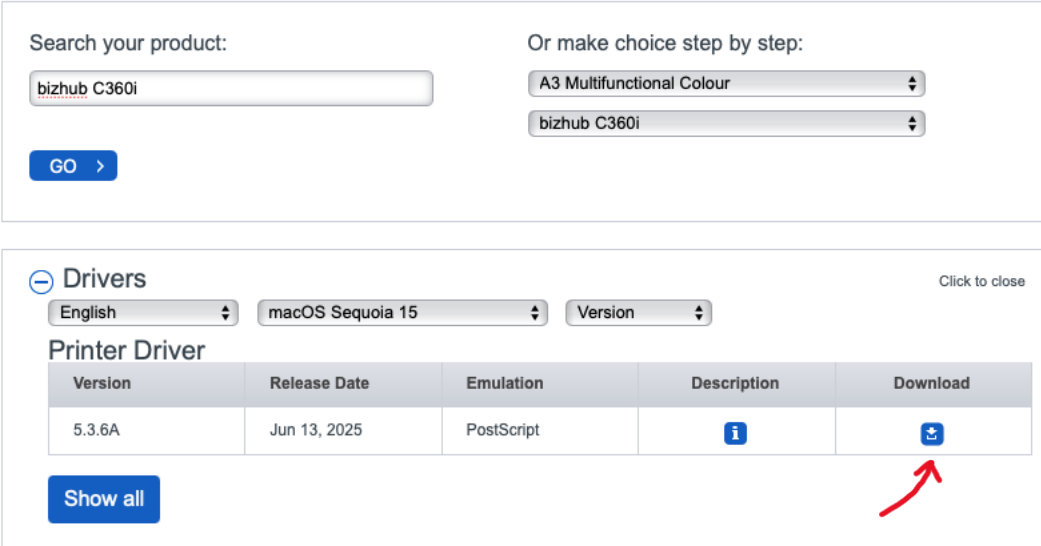
How to connect to the University Pull Printing System from a Mac

Download and install latest Konica driver for your MFD from
<https://www.biz.konicaminolta.com/download/driver.html>

Search for and select **C360i** then click **Go**

Then make sure you select the correct version of your macOS / OS X operating system. If you do not know your version, click the Apple icon in the top left corner of your screen and select **About This Mac**, look for macOS version.

Expand the **Drivers** section and click the **Download** button for the latest PostScript driver shown:



Search your product: Or make choice step by step:

GO

Drivers Click to close

English macOS Sequoia 15 Version

Printer Driver

Version	Release Date	Emulation	Description	Download
5.3.6A	Jun 13, 2025	PostScript		

Show all

Tick box to **Accept License agreement** and then click the .dmg download link to begin the download.



2. COPYRIGHT AND INTELLECTUAL PROPERTY RIGHTS

☒ Accept License agreement

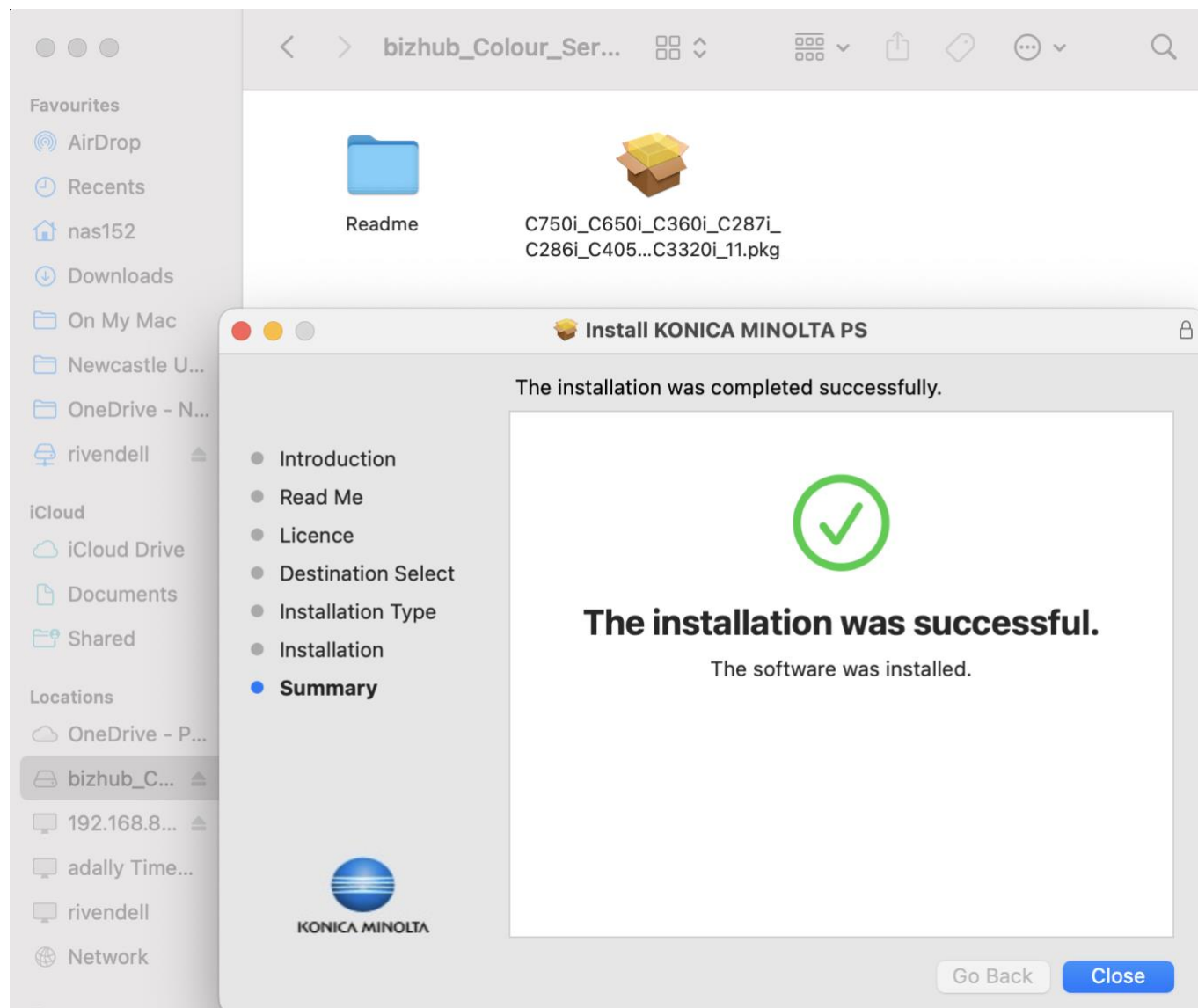
Files:

IT6PSMACOS_536AMU.dmg (97676KB)

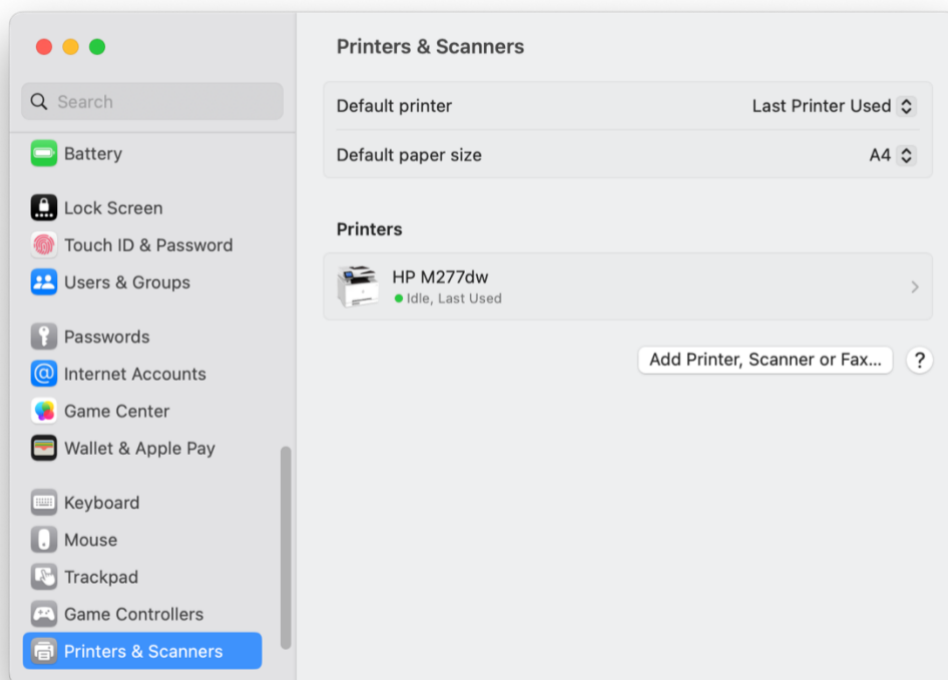
IT6PSMACOS_536AMU.txt (25KB)

< Close

Once downloaded, locate it in your **Downloads** folder. Double click it and run the resulting **.pkg** file (it looks like a box). Continue through the wizard until the driver installation has been completed. You will be prompted to enter your password or if you use Touch ID, present your finger to authorize the install.

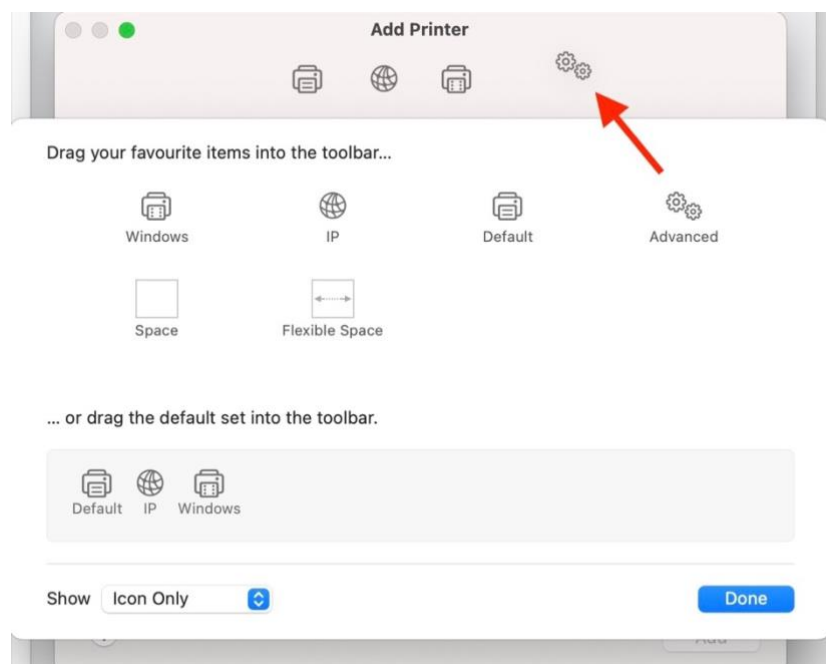


Now the driver has been installed, let's add the print queue. Open **System Settings** (previously named System Preferences prior to 2022) from the Apple menu then click **Printers & Scanners**, then click the **Add Printer, Scanner or Fax** button:



On the Add Printer menu make sure that you see the **Advanced** icon along the top toolbar.

If you do not see the Advanced (cogs) icon, then hold down the **Ctrl** key (on your keyboard) and click with the mouse on the toolbar along the top, or if you have a two button mouse **Right-click** on it to bring up the customization menu, then click **Customize Toolbar** and drag the **Advanced cog icon** up to the toolbar.



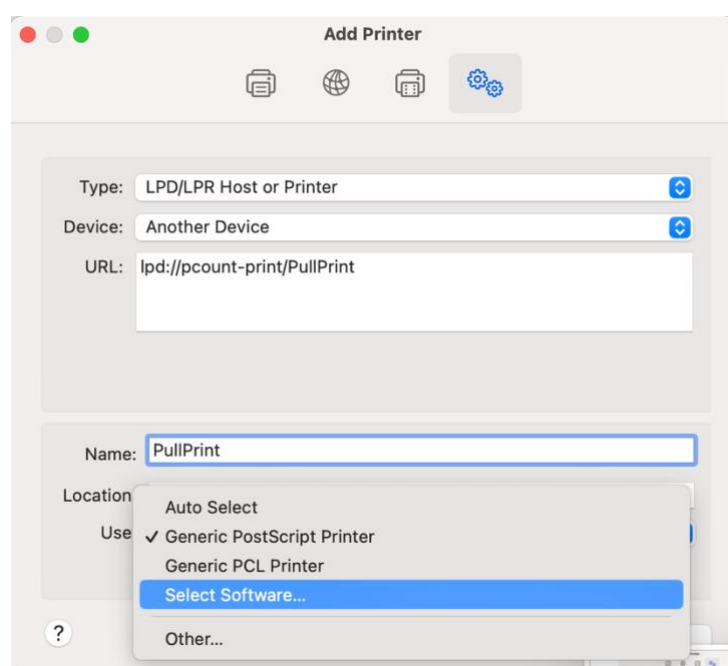
Now click the **Advanced** button.

Please read the following two instruction methods and decide which is applicable to you:

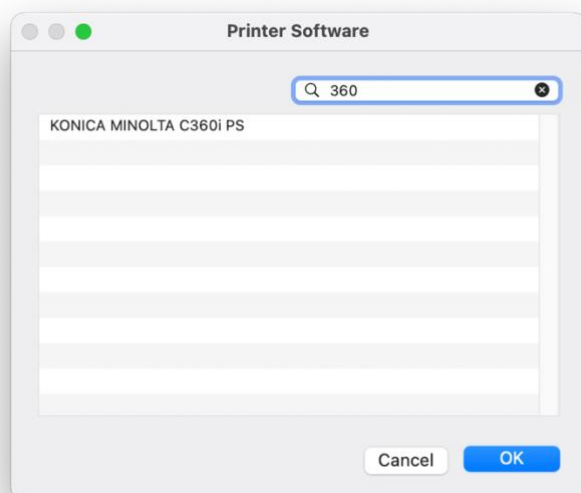
Instruction A - If your Mac username matches your University username, simply enter the appropriate URL for your area from the table below.

Instruction B - If you log in to your Mac with a username that is different to your University username, then you must insert your **University username** immediately after the lpd:// prefix.
e.g. Where your Mac username is AdamBloggs, and your University username is nab123, and your location is Professional Services, FMS, HASS or MAS, enter lpd://**nabc123@**pcount-print/PullPrint

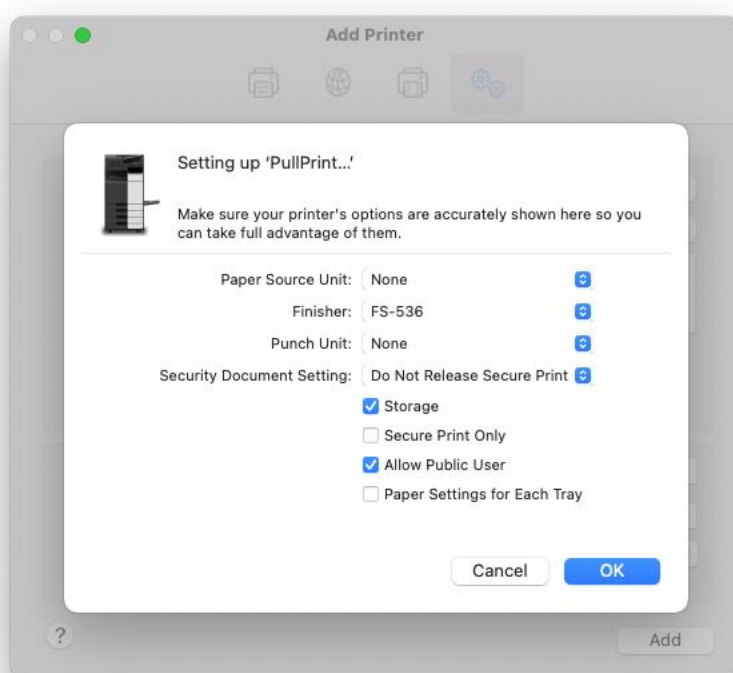
Location	URL	Name
Professional Services, FMS, HASS and MAS	lpd://pcount-print/PullPrint	PullPrint
Engineering and SNES	lpd://sage-print/SAGe_Pull(PS)	SAGe_Pull
Urban Sciences Building	lpd://cs-print/USB-BUILDING-PRINTING	USB Copiers



From the **Use** menu drop-down, click **Select Software...** and ensure that you select the correct driver installed earlier for the model of MFD, e.g. C360i:



When prompted, configure the defaults for the MFD and set the finisher to **FS-536**



Print a test page and use your campus login ID (e.g. nab123) and password when prompted at the printer to collect your print job.